

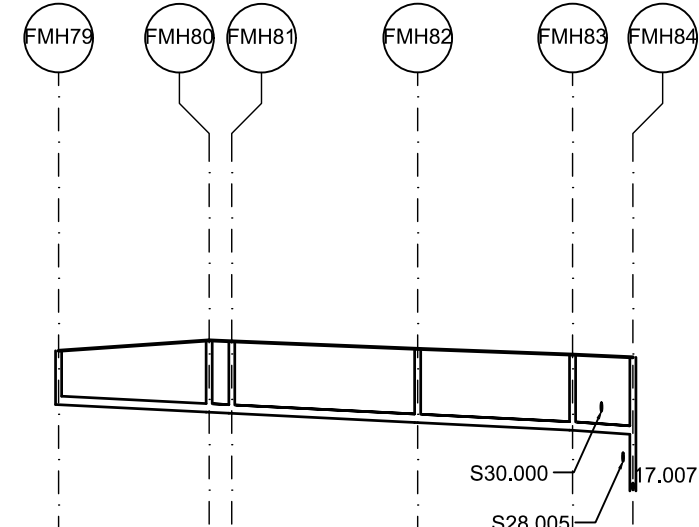
A1

DO NOT SCALE

100

0

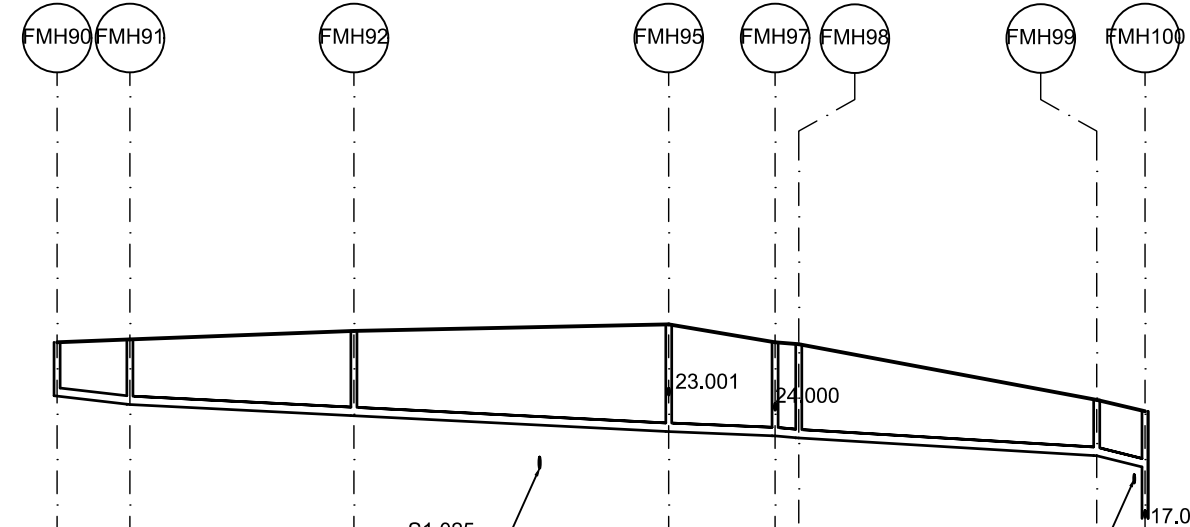
10



Hor Scale 1500  
Ver Scale 200

Datum (m) 10,000	F20,000	F20,002	F20,003
DN	225	225	225
Dia (mm)	150.1	150.1	150.1
Slope (1:X)			
Cover Level (m)	16.225	16.500 16.475	16.275 16.125
Invert Level (m)	16.600	16.641 16.571	16.120 16.009
Length (m)	29.879	36.879	30.727

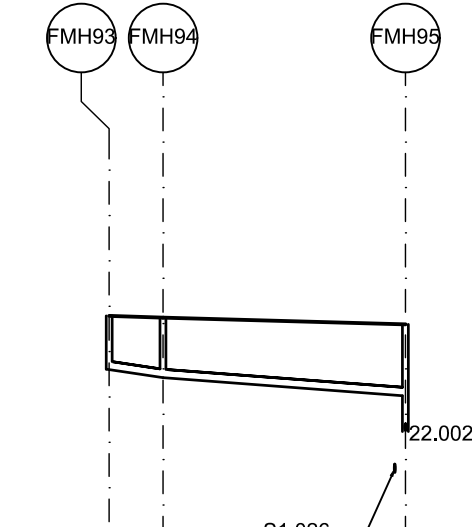
Longitudinal Section FMH79 - FMH84  
Scale 1:1500 (Horizontally), 1:200 (Vertically)



Hor Scale 1500  
Ver Scale 200

Datum (m) 10,000	F22,001	F22,002	F22,003	F22,005
DN	225	225	225	225
Dia (mm)	150.2	150.2	150.2	150.2
Slope (1:X)				
Cover Level (m)	16.450	16.525	16.750	16.400
Invert Level (m)	17.025	16.802	16.506	16.089
Length (m)	44.452	62.461	21.091	59.116

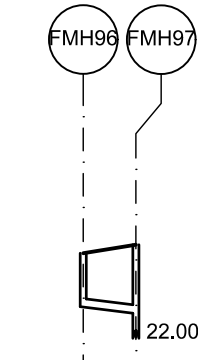
Longitudinal Section FMH90 - FMH100  
Scale 1:1500 (Horizontally), 1:200 (Vertically)



Hor Scale 1500  
Ver Scale 200

Datum (m) 10,000	F23,001
DN	225
Dia (mm)	100.0
Slope (1:X)	
Cover Level (m)	16.150
Invert Level (m)	17.725 17.572
Length (m)	48.099

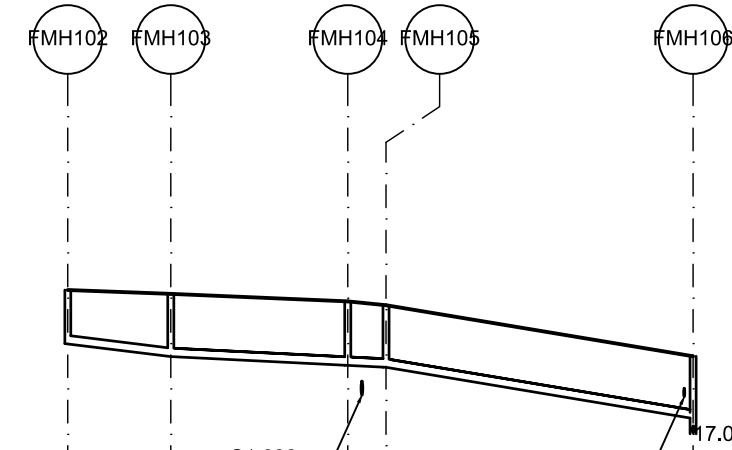
Longitudinal Section FMH93 - FMH95  
Scale 1:1500 (Horizontally), 1:200 (Vertically)



Hor Scale 1500  
Ver Scale 200

Datum (m) 10,000	F26,000	F26,003
DN	225	225
Dia (mm)	150.1	150.1
Slope (1:X)		
Cover Level (m)	16.225	16.450
Invert Level (m)	16.800 16.807	16.626
Length (m)	22.003	

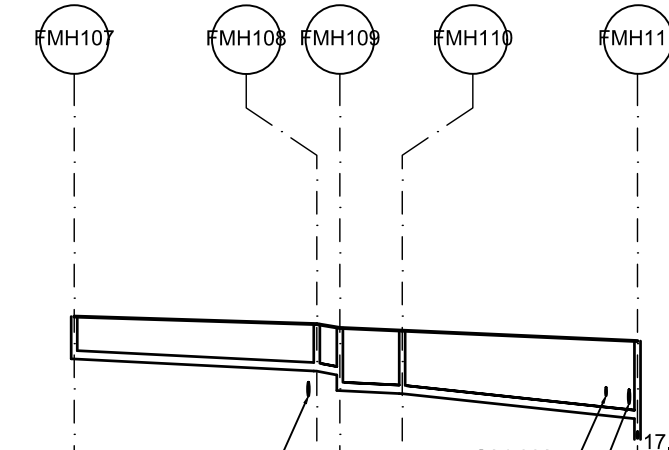
Longitudinal Section FMH96 - FMH97  
Scale 1:1500 (Horizontally), 1:200 (Vertically)



Hor Scale 1500  
Ver Scale 200

Datum (m) 10,000	F25,000	F25,001	F25,003
DN	225	225	225
Dia (mm)	150.1	150.1	150.1
Slope (1:X)			
Cover Level (m)	17.250	17.150	16.850
Invert Level (m)	15.825	15.490	15.205
Length (m)	20.442	35.115	60.928

Longitudinal Section FMH102 - FMH106  
Scale 1:1500 (Horizontally), 1:200 (Vertically)



Hor Scale 1500  
Ver Scale 200

Datum (m) 10,000	F26,000	F26,003
DN	225	225
Dia (mm)	150.0	150.0
Slope (1:X)		
Cover Level (m)	16.550	16.250
Invert Level (m)	15.425	15.104 14.889 14.589
Length (m)	48.139	46.697

Longitudinal Section FMH107 - FMH111  
Scale 1:1500 (Horizontally), 1:200 (Vertically)

© ORDNANCE SURVEY IRELAND LICENSE No. AR 0082518  
ORDNANCE SURVEY IRELAND & GOVERNMENT OF IRELAND

FINAL LAYOUT AS AGREED WITH IRISH WATER IN THE  
STATEMENT OF DESIGN ACCEPTANCE (REF NO.9451918857)  
APPENDIX A

Rev	Description	By	Date	Chk'd	Auth
B	PLANNING SUBMISSION		29.10.19	AC	GH
B	FINAL CLIENT APPROVAL		09.10.19	AC	GH
B	FOR IRISH WATER FINAL APPROVAL		26.09.16	AC	GH
A	RE ISSUED FOR IW REVIEW		09.08.19	AC	GH
-	ISSUED FOR IW REVIEW		14.05.19	AC	GH



Member of the SNC-Lavalin Group

Atkins House, 150-155 Airside  
Business Park, Swords, Co. Dublin  
Tel (+353) 01 810 8000  
Fax (+353) 01 810 8001

Unit 2B, 2200 Cork Airport  
Business Park, Cork  
Tel (+353) 021 429 0300  
Fax (+353) 021 429 0360

2nd Floor Technology House  
Parkmore Technology Park, Galway  
Tel (+353) 091 786 0500  
Fax (+353) 091 779 830

Client	AEVAL		
Project	WOODBROOK PHASE 1		

Purpose	PLANNING		
Title	PROPOSED FOUL WATER DRAINAGE LONG SECTIONS SHEET 3 OF 3		
Original Scale	Design/Drawn	Checked	Authorised
1:1000 @ A1 1:2000 @ A3	PS 13.05.19	AC 13.05.19	GH 13.05.19
Status	Drawing Number	Rev	
P	5154251 / EWE / DR / 0532	B	

File: 5154251\_EWE\_DR\_0530\_0531.dwg  
Date: Oct 30, 2019 - 7:51am  
Plotted by: jwobsh